

LCW 027T CZ wall mount installation manual for OLED/LCD/LED TV screens.

Dear clients, thank you for choosing Arkas Sp. z o.o. bracket.

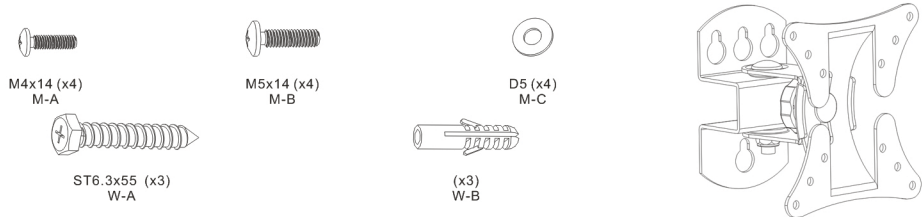
1. General information.

Bracket for wall mounting OLED / LCD / LED TV. Concerned about the safety of our customers we inform that the bracket should be installed by a qualified person. The bracket should be used as intended. Before installation, make sure that your TV does not exceed the max load capacity of the bracket. The fastening materials are intended solely for the assembly on the walls of solid wood, brick or concrete, pillars of solid wood with finishing layer thinner than 3cm. For walls made of other materials, please consult a professional.

Technical details	LCW 027T CZ
Screen size	13" - 27"
Maximum load	up to 30 kg
Space between the holes	50x50mm – 100x100mm
Distance from the wall	90 mm
Horizontal adjustment	+/-20°
Vertical adjustment	+/-15° (depending on screen size)
In package	Installation kit, user manual

2. Parts list.

The manufacturer does not take responsibility for damages caused by inappropriate installation or by using parts not included in the package.



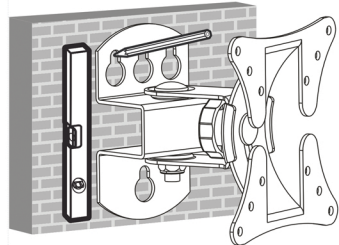
3. Installation process.

Caution! Read the manual carefully before starting.

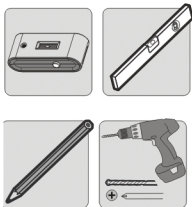
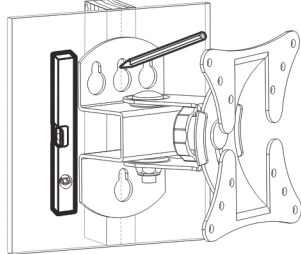
Step 1a. Wooden construction.

Place the bracket plate on the wall, level it and mark places for drilling holes. Put aside the bracket and using a driller make 2 holes in the wall with a diameter of 4,5 mm and a depth of 55 mm. Put screws in the openings. Tighten them with a screwdriver. Make sure you leave a 3 mm gap between the screw head and the wall.

1.1



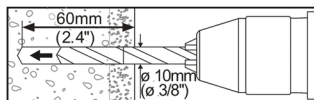
1.2



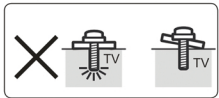
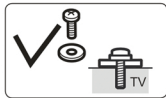
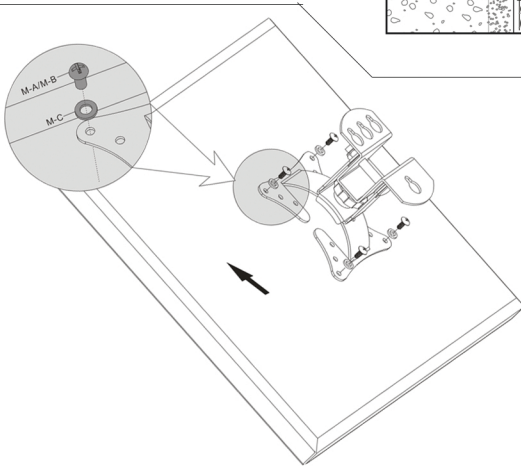
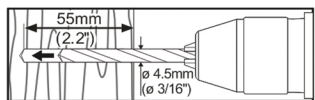
Step 1b. Brick or concrete constructions.

Place the bracket plate on the wall, level it and mark places for drilling holes. Put aside the bracket and using a driller make 3 holes in the wall with a diameter of 10 mm and a depth of 60 mm. Fit screw anchors in each of the apertures. Put screws in the openings. Tighten them with a screwdriver. Make sure you leave a 3 mm gap between the screw head and the wall.

2.1

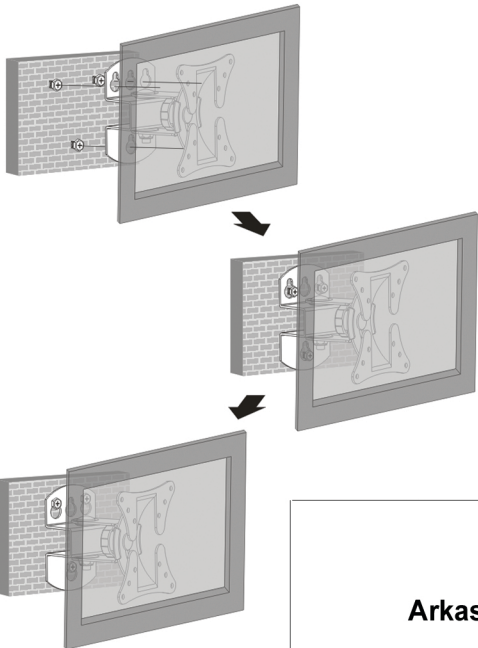


2.2



Step 2. Attach bracket plate to the back of your TV using screws (depending on the size of openings).

If needed use appropriate washers. Make sure that the bracket plate is centered to maintain proper weight distribution.



Step 4. Gently hang the screen on the screws. Before releasing the suspended screen, make sure that bracket holds firmly. Tighten the screws with a screwdriver.

Step 5. In order to change tilt angle use the tilt control knob located on the bracket. Vertical adjustment range +/-20°. Horizontal position of the screen can be manually adjusted by moving the bracket arm in right -left line. Horizontal adjustment range +/-15°.

Manufacturer statement  
Arkas Sp. z o.o. hereby declare that this product is fully safe.