

1. General information

Bracket for wall mounting OLED/LCD/LED TV screens. Concerned about the safety of our customer we inform that the bracket should be installed by a qualified person. The bracket should be used as intended. Before installation, make sure that your TV does not exceed the max load capacity of the bracket. The fastening materials are intended solely for the assembly on the walls of solid wood, brick or concrete, pillars of solid wood with finishing layer thinner than 3cm. For walls made of other materials, please consult a professional..

Technical details	LC-Y 148T CZ
Screen size	22"-48"
Maximum load	up to 25kg
Vertical hole spacing	min 75mm – max 200mm
Horizontal hole spacing	min 75mm – max 200mm
Distance from the wall	min 82 – max 195mm
Vertical adjustment	+/-20°
Horizontal adjustment	+/-90° (depending on screen size)
In package	installation kit, user manual

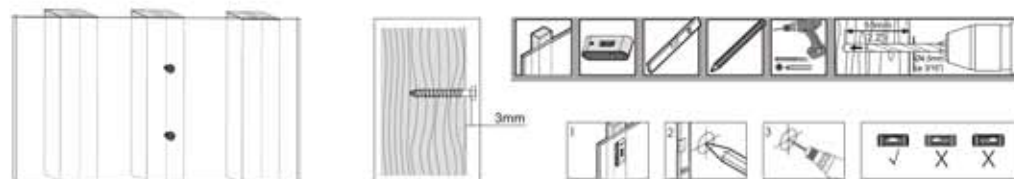
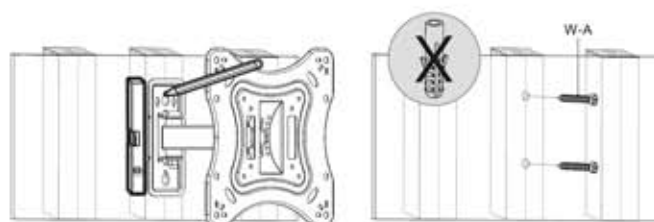
2. Part list

The manufacturer does not take responsibility for damages caused by inappropriate installation or by using parts not included in the package.



3. Installation process

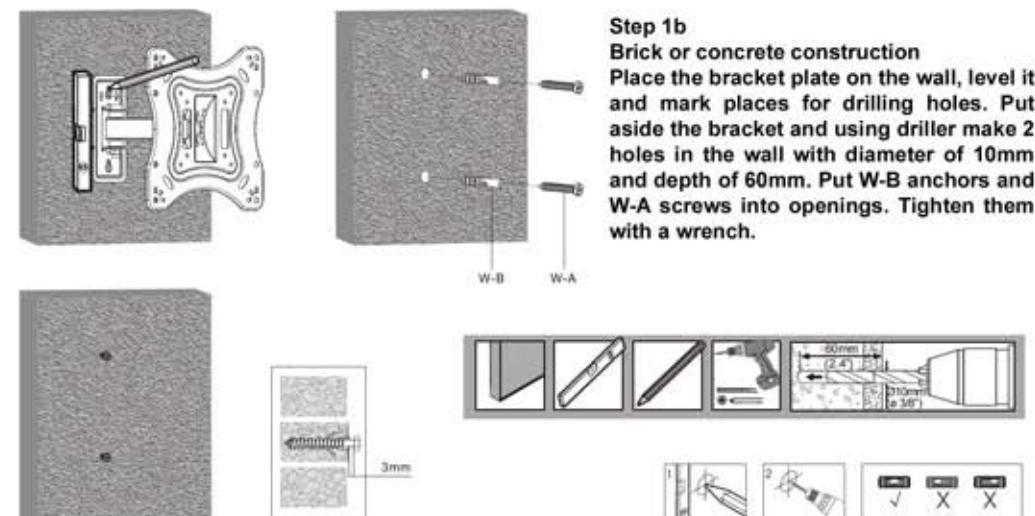
Caution! Read the manual carefully before starting..



Step 1a

Wooden construction

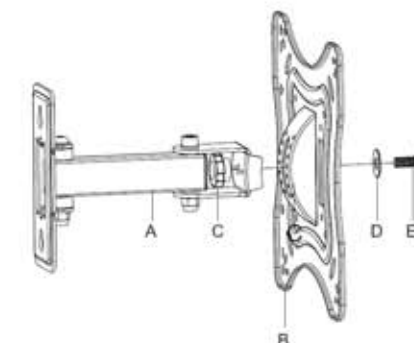
Place the bracket plate on the wall, level it and mark places for drilling holes. Put aside the bracket and using driller make 2 holes in the wall with diameter of 4,5mm and depth of 55mm. Put W-A screws into openings. Tighten them with a wrench.



Step 1b

Brick or concrete construction

Place the bracket plate on the wall, level it and mark places for drilling holes. Put aside the bracket and using driller make 2 holes in the wall with diameter of 10mm and depth of 60mm. Put W-B anchors and W-A screws into openings. Tighten them with a wrench.

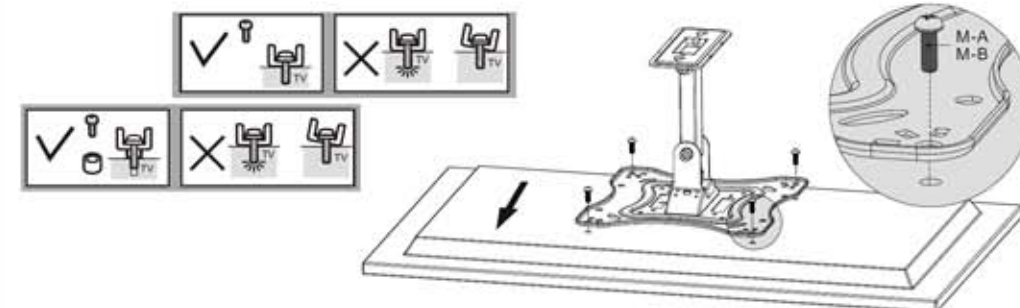


Step 2

Connect bracket adapter B with bracket arm A using knob C, washer D and screw E.

Step 3

Using screws M-A/M-B (depending on the aperture size) mount bracket adapter on the back of your TV. Make sure that the adapter adhere to the back of TV firmly. If the back of the TV screen is irregular use M-C spacers and M-B screws.

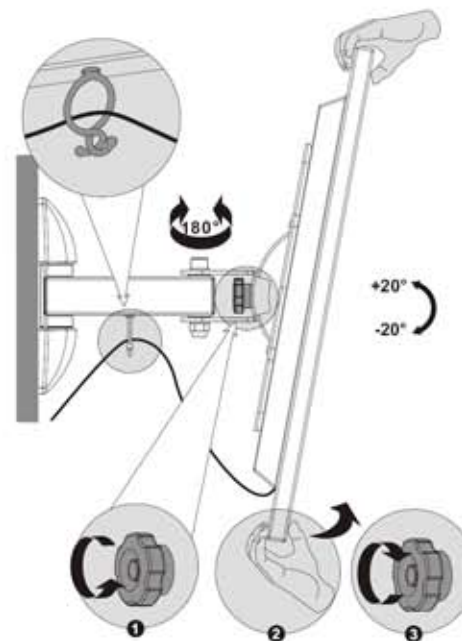
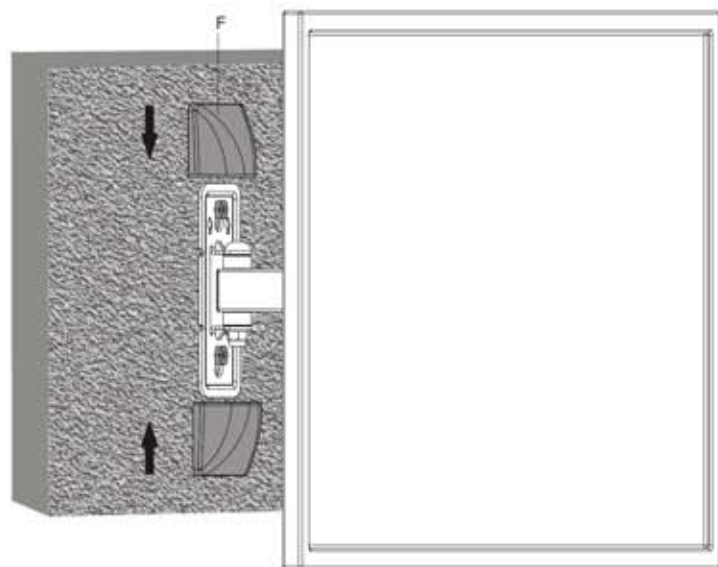


Step 4

Hang the TV screen with bracket adapter on the previously prepared screws. Make sure all screws are tightened before releasing suspended TV screen.

Step 5

Install the bracket mask and cable management clip.

**Step 6**

In order to change tilt angle use knob on the bracket arm. Tighten it back after setting desirable TV position.

